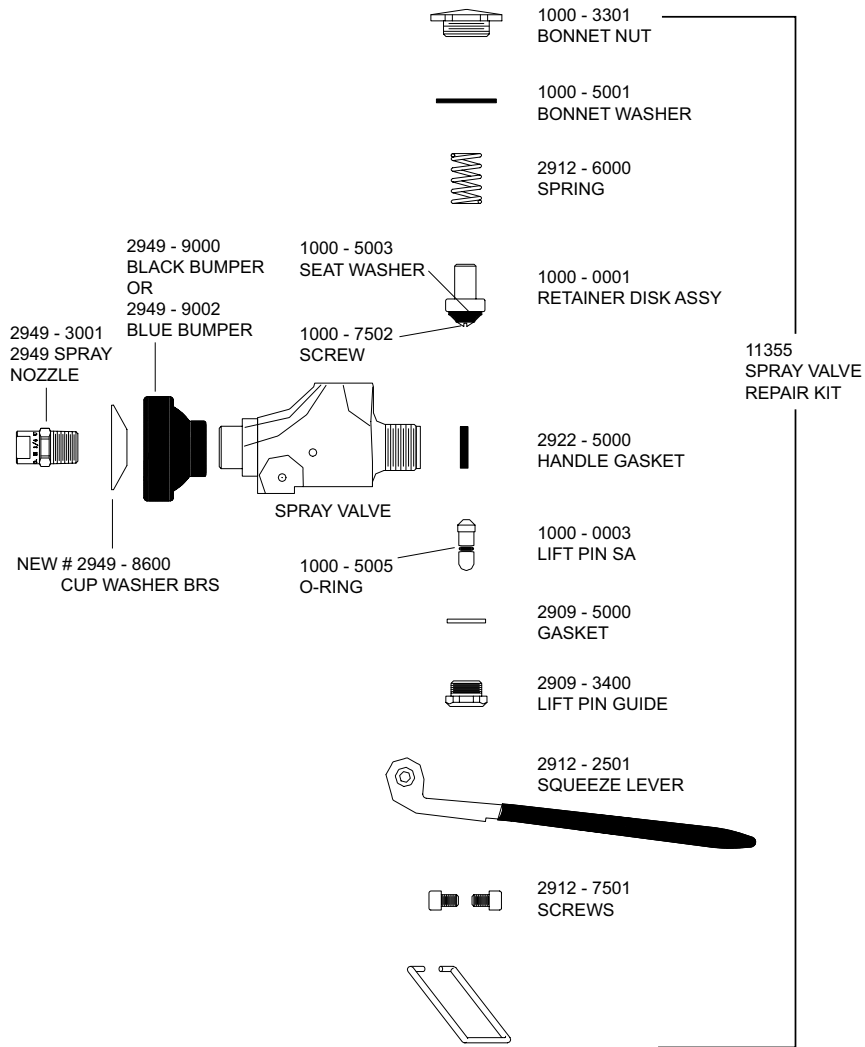


Replacement Parts for Spray Valves



Pre-Rinse Spray Valve Product Installation Guide

Since 1936, Fisher Manufacturing Company has manufactured heavy-duty, high quality plumbing products and hardware specialties for the food service industry. For three generations, the Fisher family has adhered to a strict dedication of and overall value. When you install Fisher products... you install the best. Our hardware is manufactured with the standardization of internal mechanisms. All chrome plating is triple plated copper, nickel and chrome for durability. Every piece of equipment we make is rigorously tested in both our modern in-house testing center and in actual field situations under extreme conditions. Every detail is thoroughly checked. Before we make our products available to you, they pass each and every test. You get proven performance. Guaranteed.



#2949 - Ultra Spray Valve, 1.15 GPM @ 60 PSI

Limited One Year Warranty

Fisher Manufacturing Company warrants its products and parts thereof (except as noted below) against defects in materials or workmanship for a period of one year after the date of original purchase. During this period Fisher Manufacturing Company will replace a defective product or part without charge to you, provided that the entire product is delivered to Fisher Manufacturing Company. All transportation and insurance charges for shipping the product to and from Fisher Manufacturing Company must be borne by you. Charges for transportation and insurance may, at the option of Fisher Manufacturing Company, be refunded depending upon our investigation of the warranty claim. This warranty does not cover external finish (except at date of original purchase) or labor costs not specifically authorized by Fisher Manufacturing Company.

A full and complete copy of our One Year limited warranty is available upon request.

WARNING:

Proposition 65 requires that we provide you with the following notice: "This product Contains A Chemical Known To The State Of California To Cause Birth Defects Or Other Reproductive Harm."

KEEP THIS MANUAL FOR FUTURE REFERENCE



ANSI/A112.18.1M, ANSI/NSF 61.9

FISHER MANUFACTURING COMPANY - TOLL FREE: 800-421-6162 FAX: 800-832-8238

FISHER
MANUFACTURING COMPANY
PO BOX 60, TULARE, CA 93275
(800)421-6162, FAX: (800)832-8238
www.fisher-mfg.com

Installatalling Your New Fisher Ultra Pre-Rise Spray

Installation Notes:

Tools Required for Installation

- Medium Sized Crescent Wrench

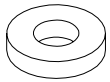


Package Contents

The box should contain the following:



2949
Ultra Pre-Rinse
Spray Valve
Qty: 1

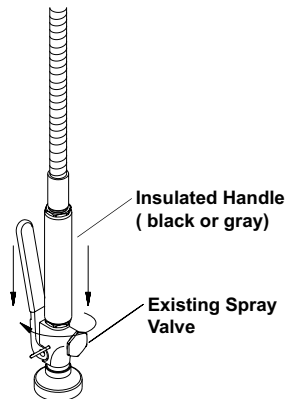


2922-5000
Handle Gasket
Qty: 1

Installation Instructions

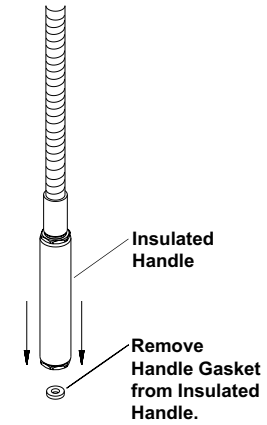
1. Turn off water supply.
2. Remove existing spray valve, from the insulated handle. Place an adjustable-wrench or a 1" wrench on Insulated handle while turning the existing spray valve with your hand clockwise. See Step 1
3. After removal of the existing spray valve, remove old handle gasket and clean any debris from the insulated handle. See Step 2
4. Open the 2949 package, insert the new handle gasket into the insulated handle. See Step 3
5. Hand tighten the 2949 spray valve on the insulated handle. Using an adjustable wrench or a 1" wrench on the insulated handle, while turning the 2949 spray valve counter clockwise, until snug. See Step 4
6. Turn on water supply and check for leaks.

Step 1

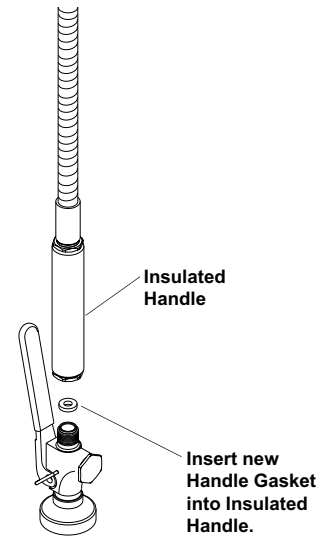


Installation Instructions Continued

Step 2



Step 3



Step 4

