



Model: \_\_\_\_\_

Item #: \_\_\_\_\_ Quantity: \_\_\_\_\_

Project: \_\_\_\_\_



**1800 or 2100 Series Available**  
(see reverse)

### Accessories

- Stainless steel Splash.
- Perforated Dump Box.
- Towel Ring.
- Royal Faucet (Upgrade).
- Stainless Steel Legs (Upgrade).

- **Soap Dispenser:**  
Spout removes from top for easy filling. Chrome plated spout with plastic soap reservoir below.
- **Towel Dispenser:**  
Paper towels easily accessed from below with front door. Door swings open for refilling.
- **Sink Bowl:**  
20 gauge stainless steel 10" x 14" x 6" deep. 1 1/2" radius on all vertical and horizontal corners. Furnished with a 1 1/2" stainless steel drain.
- **Front Apron:**  
22 gauge stainless steel.
- **Backsplash:**  
22 gauge stainless steel.
- **Sides:**  
20 gauge stainless steel.
- **Back and Bottom:**  
20 gauge galvaneal.
- **Legs:**  
1 5/8" tubular 16 gauge galvanized steel with grey plastic bullet foot.
- **Water Faucet:**  
4" center splash mount faucet on 1800 models.  
4" center deck mount faucet on 2100 models.
- **Plumbing:**  
1/2" IPS hot and cold water.  
1 1/2" IPS drain connection.

Approved By: \_\_\_\_\_

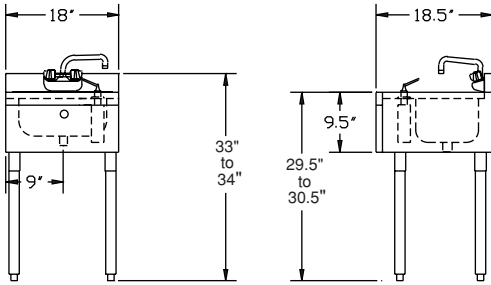
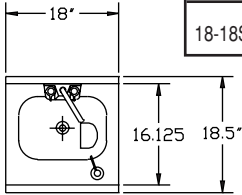
Model: \_\_\_\_\_ Item #: \_\_\_\_\_ Quantity: \_\_\_\_\_ Project: \_\_\_\_\_



### 1800 Series

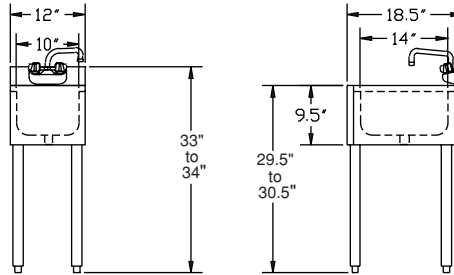
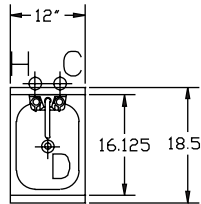
#### Handsink with Soap & Towel

Model Numbers	Length	Left Side to Drain	Weight lbs
18-18ST	1'-6"	10" x 14" x 6"	37



#### Hand/Dump Sink

Model Numbers	Length	Left Side to Drain	Weight lbs.
18-1C	1'-0"	6"	25

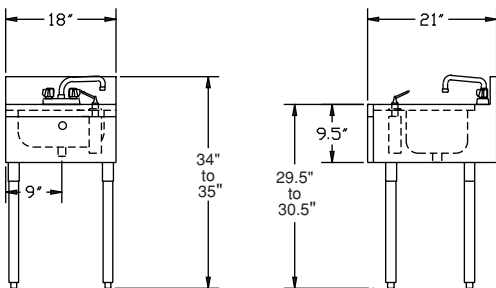
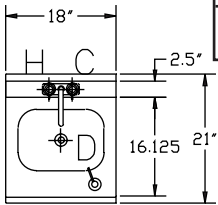


Above unit with four legs.

### 2100 Series

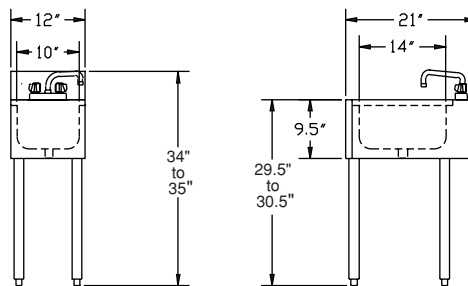
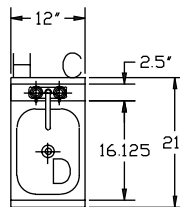
#### Handsink with Soap & Towel

Model Numbers	Length	Left Side to Drain	Weight lbs
21-18ST	1'-6"	9"	44



#### Hand/Dump Sink

Model Numbers	Length	Left Side to Drain	Weight lbs.
21-1C	1'-0"	6"	25



Above unit with four legs.

#### Mechanical Requirements:

- 1/2" IPS hot and cold water
- 1 1/2" IPS drain connection

Approved By: \_\_\_\_\_

Due to our commitment to continued product improvement, specifications are subject to change without notice.